

HYDROSTATIC STEERING UNITS TYPE HKUS.../5RDT



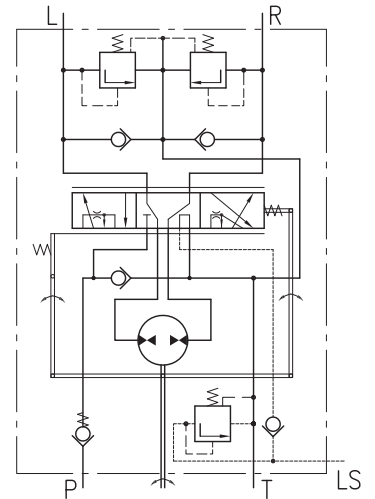
HKUS.../5RDT is a new generation steering unit with load sensing dynamic signal and integrated valve functions.

The hydraulic steering unit is applied on all types of agriculture and construction transportation vehicles which maximum speed does not exceed 60 km/h.

This steering unit has low torque and low noise.

HKUS.../5RDT works in a system with a dynamic priority valve and it is appropriate for machines with increased energy saving requirements.

The dynamic flow to LS-line allows easy and smooth control when starting steering.



Closed Center - Load Reaction
HKUS.../5RDT

SPECIFICATION DATA

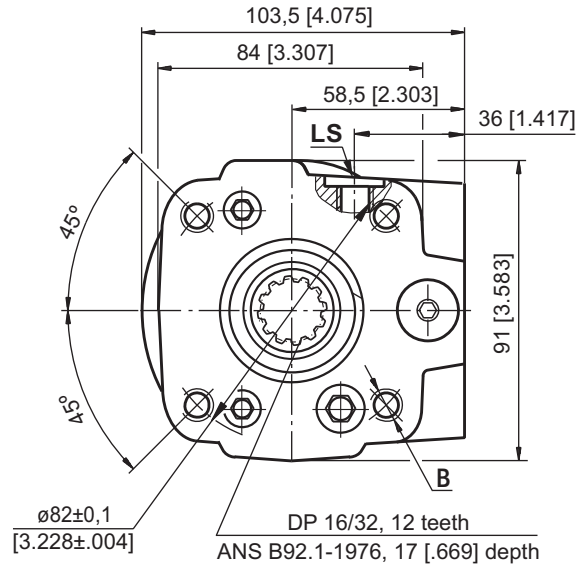
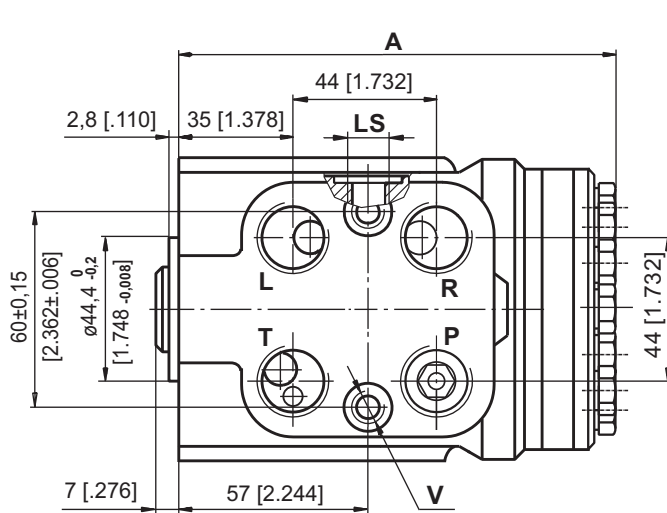
Parameters	Type							
	HKUS 40/5RDT	HKUS 50/5RDT	HKUS 63/5RDT	HKUS 80/5RDT	HKUS 100/5RDT	HKUS 125/5RDT	HKUS 160/5RDT	HKUS 200/5RDT
Displacement	39,6	49,5	65,6	79,2	99,0	123,8	158,4	198
	[2.42]	[3.0]	[4.0]	[4.83]	[6.04]	[7.56]	[9.67]	[12.1]
Rated Flow*	4	5	6	8	10	13	16	20
	[1.1]	[1.3]	[1.6]	[2.1]	[2.6]	[3.4]	[4.2]	[5.3]
Rated Pressure	125	150	175					
	[1810]	[2175]	[2540]					
LS-Valve Pressure			80	100	125	150	175	
Settings**			[1160]	[1450]	[1810]	[2175]	[2540]	
Shock Valves Pressure			140	160	180	200	240	
Settings***			[2030]	[2320]	[2610]	[2900]	[3480]	
Max. Cont. Pressure								
in Line T								
- standard	20 [290]							
- high pressure (H option)	40 [580]							
Max. Torque at								
Servoamplifying								
-with standard springs	3,0 [26]							
-with soft springs (LT option)	1,8 [16]							
Max. Torque w/o								
Servoamplifying	120							
	[1065]							
Weight	5,3	5,4	5,5	5,6	5,7	5,8	6,0	6,3
	[11.7]	[11.9]	[12.2]	[12.4]	[12.6]	[12.8]	[13.2]	[13.9]
Dimension A	130,8	132,2	133,9	136,2	138,8	142,2	146,8	152,2
	[5.15]	[5.20]	[5.27]	[5.36]	[5.47]	[5.60]	[5.78]	[5.99]

* Rated Flow at 100 RPM.

** Pressure Settings are at flow rate of 25 lpm [6.6 GPM] and viscosity 21 mm²/s [105 SUS] at 50°C [122°F], supplied through priority valve.

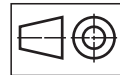
*** Pressure Settings are at flow rate of 2 lpm [.53 GPM] and viscosity 21 mm²/s [105 SUS] at 50°C [122°F].

DIMENSIONS AND MOUNTING DATA



code	Ports - P*, T, R, L Thread	Column Mounting Thread - B	Valve Mounting Thread- V	LS - Port
-	G1/2 17 [.67] depth	4 x M10 18 [.71] depth	2 x M10x1 16 [.63] depth	G1/4 14 [.55] depth
M	M22x1,5 17 [.67] depth	4 x M10 18 [.71] depth	2 x M10x1 16 [.63] depth	G1/4 14 [.55] depth
MBO	M18x1,5 O-ring 17 [.67] depth	4 x M10 18 [.71] depth	2 x M10x1 16 [.63] depth	M12x1,5 O-ring 11,5 [.45] depth
A	3/4 - 16 UNF O-ring 17 [.67] depth	4 x 3/8 - 16 UNC 15,7 [.62] depth	2 x 3/8 - 24 UNF 14,2 [.56] depth	7/16 - 20 UNF O-ring 12,7 [.50] depth

*Threaded Ports Pmin 15 [.59] depth for pipe mounting.



mm [in]

ORDER CODE for HKUS.../5RDT

1	2	3	4	5	6	7	8	9	10
HKUS	/	5R	D	T	-				

Pos.1 - Displacement code

40	- 39,6 cm ³ /rev [2.42 in ³ /rev]
50	- 49,5 cm ³ /rev [3.00 in ³ /rev]
63	- 65,6 cm ³ /rev [4.00 in ³ /rev]
80	- 79,2 cm ³ /rev [4.83 in ³ /rev]
100	- 99,0 cm ³ /rev [6.04 in ³ /rev]
125	- 123,8 cm ³ /rev [7.56 in ³ /rev]
160	- 158,4 cm ³ /rev [9.67 in ³ /rev]
200	- 198,0 cm ³ /rev [12.10 in ³ /rev]

Pos.2 - Version

5R	- Version 5R "Closed Center - Reaction"
----	---

Pos.3 - Signal Type

D	- Dynamic Load Signal
---	-----------------------

Pos.4 - Signal Type

T	- Piping Mount
---	----------------

Pos.5 - Relief Valve Pressure Settings on LS-line, bar

80, 100, 125, 150, 175

Notes: * Colour at customer's request.

** Non painted feeding surfaces, colour at customer's request.

The steering units are mangano-phosphatized as standard.

Pos.6 - Ports

omit	- BSPP (ISO 228)
M	- Metric (ISO 262)
MBO	- Metric (ISO 6149-1)
A	- SAE (ANSI B1.1-1982)

Pos.7 - Max. Cont. Pressure in line T

omit	- Standard
H	- High pressure

Pos.8 - Input torque

omit	- Standard
LT*	- Low

Pos.9 - Option (Paint)*

omit	- No Paint
P	- Painted
PC	- Corrosion Protected Paint
PS	- Special Paint**
PCS	- Special Corrosion Protected Paint**

Pos.10 - Design Series

omit	- Factory specified
------	---------------------