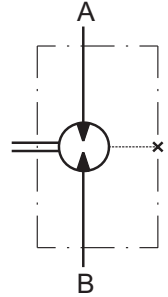


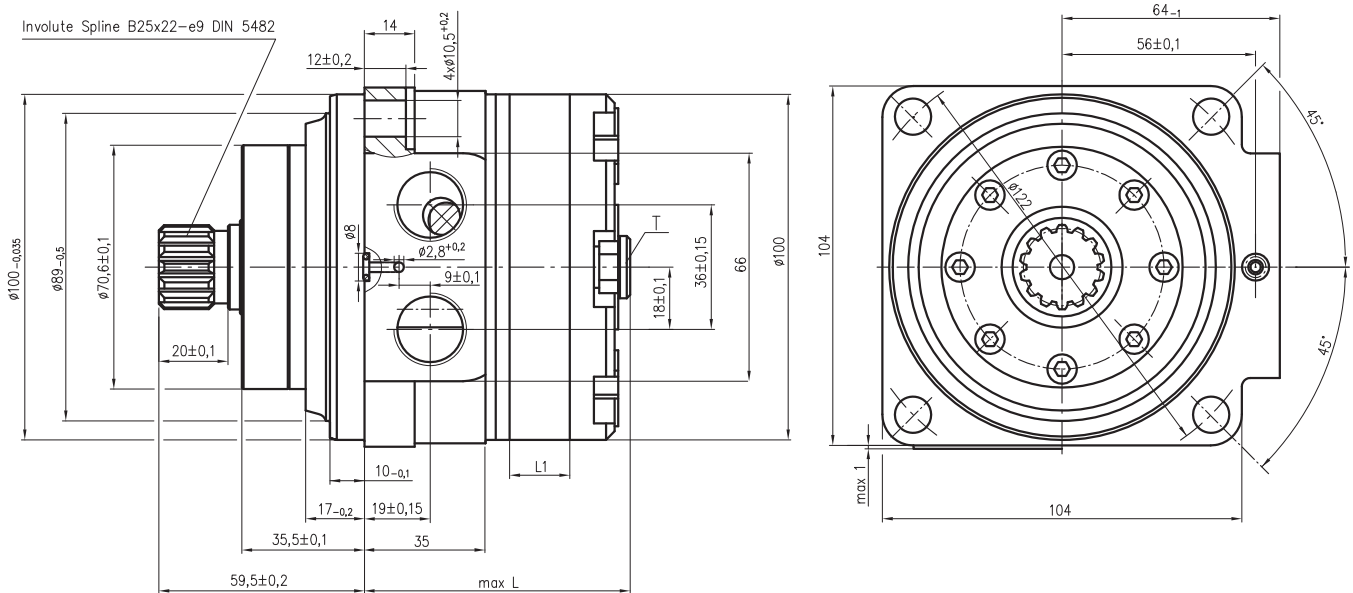
Hydraulic motors type RMS

INTRODUCTION

M+S Hydraulic introduces a new series of short motors for gear boxes type **RMS**. Motors have a spool valve: the distribution valve is integrated in the output shaft. Small in size. Motion control valve and brake can be coupled to the motor. Available with displacement from 50 up to 400 cm³/rev and power up to 10,8 kW.



OUTLINE DIMENSIONS REFERENCE



P_(A, B): 2xG1/2 - 16 mm depth

T : G1/4 - 10 mm depth (plugged)

Standard Rotation

Viewed from Shaft End

Port **A** Pressurized - **CW**

Port **B** Pressurized - **CCW**

Reverse Rotation

Viewed from Shaft End

Port **A** Pressurized - **CCW**

Port **B** Pressurized - **CW**

Type	L, mm	L ₁ , mm
RMS 50	69	9,0
RMS 80	74	14,0
RMS 100	77	17,4
RMS 125	82	21,8
RMS 160	88	27,8
RMS 200	95	34,8
RMS 250	92	32,5
RMS 300	99	39,3
RMS 400	112	52,4

SPECIFICATION DATA

Type	RMS 50	RMS 80	RMS 100	RMS 125	RMS 160	RMS 200	RMS 250	RMS 300	RMS 400
Displacement, [cm ³ /rev]	51,5	80,3	99,8	125,5	159,6	199,8	229	277	369
Max. Speed, [RPM]	cont.	775	750	600	475	375	300	240	150
	int.*	970	870	770	555	435	350	305	190
Max. Torque [daNm]	cont.	10,0	15,7	19,8	25	32	34	34,5	39
	int.*	13	19,5	24	30	39	47	46,5	50,2
	peak**	17	27	32	37	46	56	64	65
Max. Output, [kW]	cont.	7	10,4	10,8	10,8	10,4	8,8	8,1	6,2
	int.*	8,5	12,6	12,8	12,5	11,5	10,2	9,4	7,1
Max. Pressure Drop [bar]	cont.	140	140	140	140	140	125	110	80
	int.*	175	175	175	175	175	175	150	125
	peak**	225	225	225	225	225	225	200	150
Max. Oil Flow [l/min]	cont.	40	60	60	60	60	60	60	60
	int.*	50	70	70	70	70	70	70	70
Max. Inlet Pressure [bar]	cont.	175	175	175	175	175	175	175	175
	int.*	200	200	200	200	200	200	200	200
	peak**	225	225	225	225	225	225	225	225
Max. Return Pressure w/o Drain Line or max. Pressure in Drain Line, [bar]	cont.0-100 RPM	150	150	150	150	150	150	150	150
	cont.100-300 RPM	75	75	75	75	75	75	75	75
	cont.300-600 RPM	50	50	50	50	50	50	50	50
	cont.>600 RPM	20	20	20	20	20	20	20	20
	int.* 0-max. RPM	150	150	150	150	150	150	150	150
Max. Return Pressure with Drain Line, [bar]	cont.	125	125	125	125	125	125	125	125
	int.*	175	175	175	175	175	175	175	175
Max. Starting Pressure with Unloaded Shaft, [bar]	10	10	10	10	10	10	10	10	10
Min. Starting Torque [daNm]	8	12	16	20	25	29	28	32	35
Min. Speed***, [RPM]	10	10	10	10	10	10	10	10	10

* Intermittent operation: the permissible values may occur for max. 10% of every minute.

** Peak load: the permissible values may occur for max. 1% for every minute.

*** For speeds of 10 RPM or lower, consult factory or your regional manager.

ORDER CODE

	1	2	3	4
RMS				

Pos. 1 - Displacement code

50	- 51,5 [cm ³ /rev]
80	- 80,3 [cm ³ /rev]
100	- 99,8 [cm ³ /rev]
125	- 125,7 [cm ³ /rev]
160	- 159,6 [cm ³ /rev]
200	- 199,8 [cm ³ /rev]
250	- 229,0 [cm ³ /rev]
300	- 277,0 [cm ³ /rev]
400	- 369,0 [cm ³ /rev]

NOTES:

* Color at customer's request.

The hydraulic motors are manganese-phosphatized as standard.

Pos. 2 - Rotation

omit - Standard Rotation
R - Reverse Rotation

Pos. 3 - Option (Paint)**

omit - no Paint
P - Painted
PC - Corrosion Protected Paint

Pos. 4 - Design Series

omit - Factory specified



68, Kozloduy St., 6100 Kazanlak, Bulgaria

Tel.: ++359 431 63010

Fax: +359 431 64114

E-Mail: msh@ms-hydraulic.com