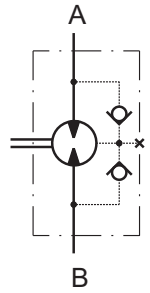


Product Tech News

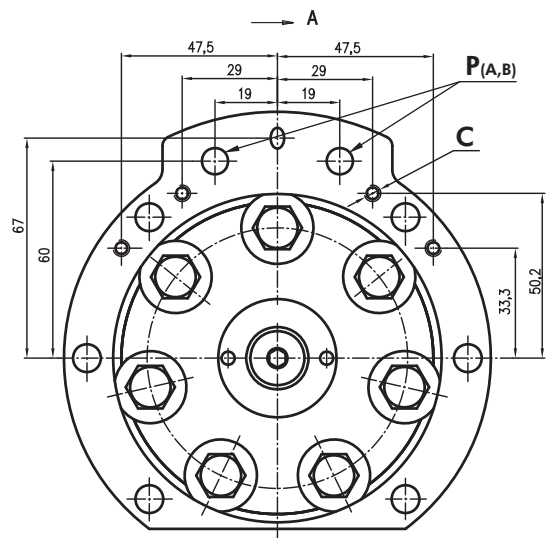
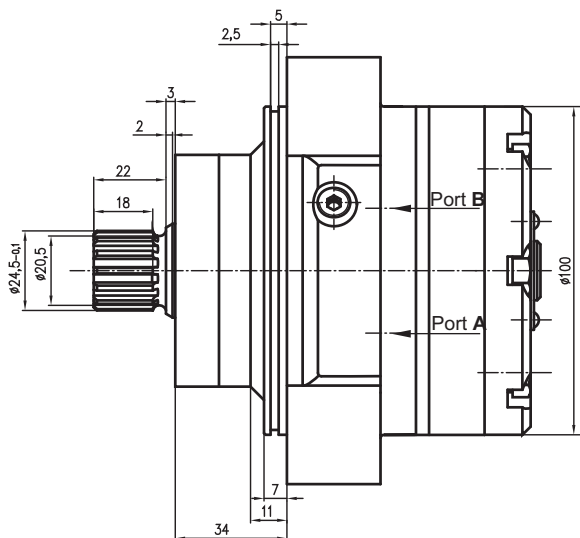
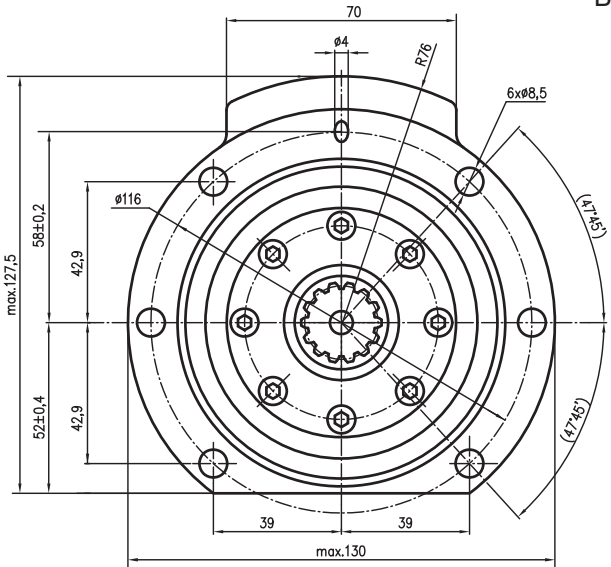
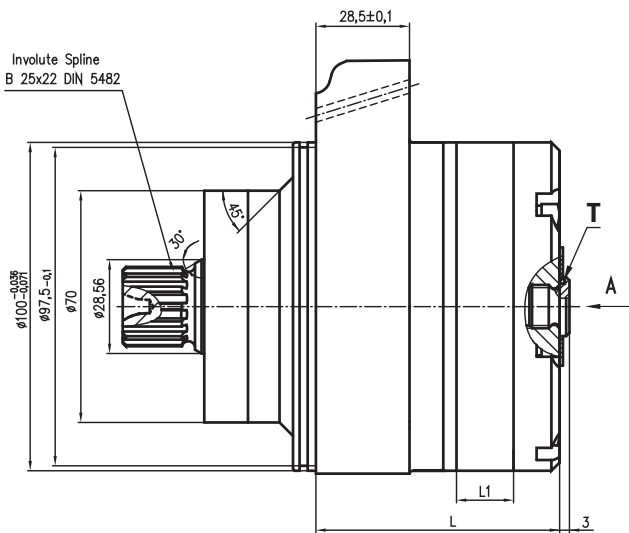
## Hydraulic motors type RMG-series 3

### INTRODUCTION

M+S Hydraulic introduces a new series of short motors for gear boxes type RMG. Motors have a spool valve: the distribution valve is integrated in the output shaft. Small in size. Motion control valve and brake can be coupled to the motor. Two check valves in the housing. Available with displacement from 50 up to 400 cm<sup>3</sup>/rev and power up to 12,7 kW.



### OUTLINE DIMENSIONS REFERENCE



**P<sub>(A, B)</sub>**: 2xø8

**T** : G1/4 - 12 mm depth (plugged)

**C** : 4xM5 - 12 mm depth

#### Standard Rotation

Viewed from Shaft End

Port **A** Pressurized - **CW**

Port **B** Pressurized - **CCW**

#### Reverse Rotation

Viewed from Shaft End

Port **A** Pressurized - **CCW**

Port **B** Pressurized - **CW**

Type	L, mm	L <sub>1</sub> , mm
RMG 50	66	9,0
RMG 80	71	14,0
RMG 100	74,4	17,4
RMG 125	78,8	21,8
RMG 160	84,8	27,8
RMG 200	91,8	34,8
RMG 250	100,5	43,5
RMG 300	96,3	39,3
RMG 400	109,4	52,4

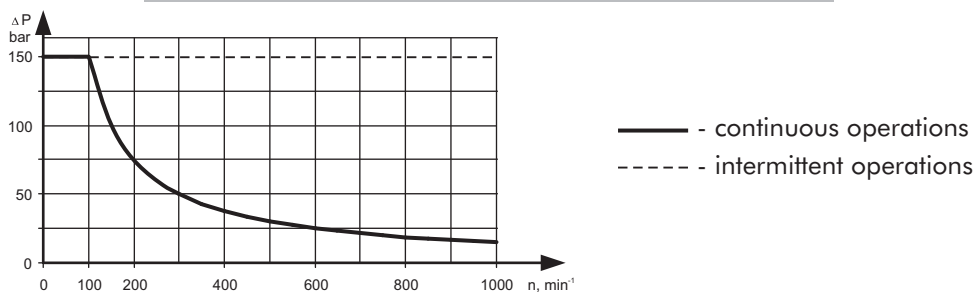
## SPECIFICATION DATA

Type	RMG 50	RMG 80	RMG 100	RMG 125	RMG 160	RMG 200	RMG 250	RMG 300	RMG 400
Displacement, [cm <sup>3</sup> /rev]	51,5	80,3	99,8	125,5	159,6	199,8	250,1	277	369
Max. Speed, [RPM]	cont.	775	750	600	475	375	300	240	162
	int.*	970	935	750	600	470	375	300	203
Max. Torque [daNm]	cont.	10	19,5	24	30	32	34,4	38	40,9
	int.*	13	21,2	26,4	33,2	39	47	47,9	50,2
	peak**	17	27	32	37	46	56	62,5	80,6
Max. Output, [kW]	cont.	8,2	8,2	8,2	8,2	8,2	8,2	7,9	5,4
	int.*	9,7	9,7	9,7	9,7	9,7	12,7	12	7,8
Max. Pressure Drop [bar]	cont.	140	175	175	175	140	125	110	80
	int.*	175	200	200	200	175	175	150	105
	peak**	225	225	225	225	225	225	210	180
Max. Oil Flow [l/min]	cont.	40	60	60	60	60	60	60	60
	int.*	50	75	75	75	75	75	75	75
Max. Inlet Pressure [bar]	cont.	175	175	175	175	175	175	175	175
	int.*	200	200	200	200	200	200	200	200
	peak**	225	225	225	225	225	225	225	22
Max. Starting Pressure with Unloaded Shaft, [bar]	10	10	10	9	7	5	4	3	3
Min. Starting Torque [daNm]	8	15,5	19,3	24	25,6	29,5	29,3	28,8	31,8

\* Intermittent operation: the permissible values may occur for max. 10% of every minute.

\*\* Peak load: the permissible values may occur for max. 1% for every minute.

## MAX. PERMISSIBLE SHAFT SEAL PRESSURE



## ORDER CODE

RMG	1	2	3	4

## Pos. 1 - Displacement code

<b>50</b>	- 51,5 [cm <sup>3</sup> /rev]
<b>80</b>	- 80,3 [cm <sup>3</sup> /rev]
<b>100</b>	- 99,8 [cm <sup>3</sup> /rev]
<b>125</b>	- 125,7 [cm <sup>3</sup> /rev]
<b>160</b>	- 159,6 [cm <sup>3</sup> /rev]
<b>200</b>	- 199,8 [cm <sup>3</sup> /rev]
<b>250</b>	- 250,1 [cm <sup>3</sup> /rev]
<b>300</b>	- 277,0 [cm <sup>3</sup> /rev]
<b>400</b>	- 369,0 [cm <sup>3</sup> /rev]

## NOTES:

\* Color at customer's request.

The hydraulic motors are manganese-phosphatized as standard.

## Pos. 2 - Rotation

omit - Standard Rotation  
**R** - Reverse Rotation

## Pos. 3 - Option (Paint)\*\*

omit - no Paint  
**P** - Painted  
**PC** - Corrosion Protected Paint

## Pos. 4 - Design Series

omit - Factory specified



68, Kozloduy St., 6100 Kazanlak, Bulgaria

Tel.: ++359 431 65167

Fax: +359 431 64114

E-Mail: [msh@ms-hydraulic.com](mailto:msh@ms-hydraulic.com)